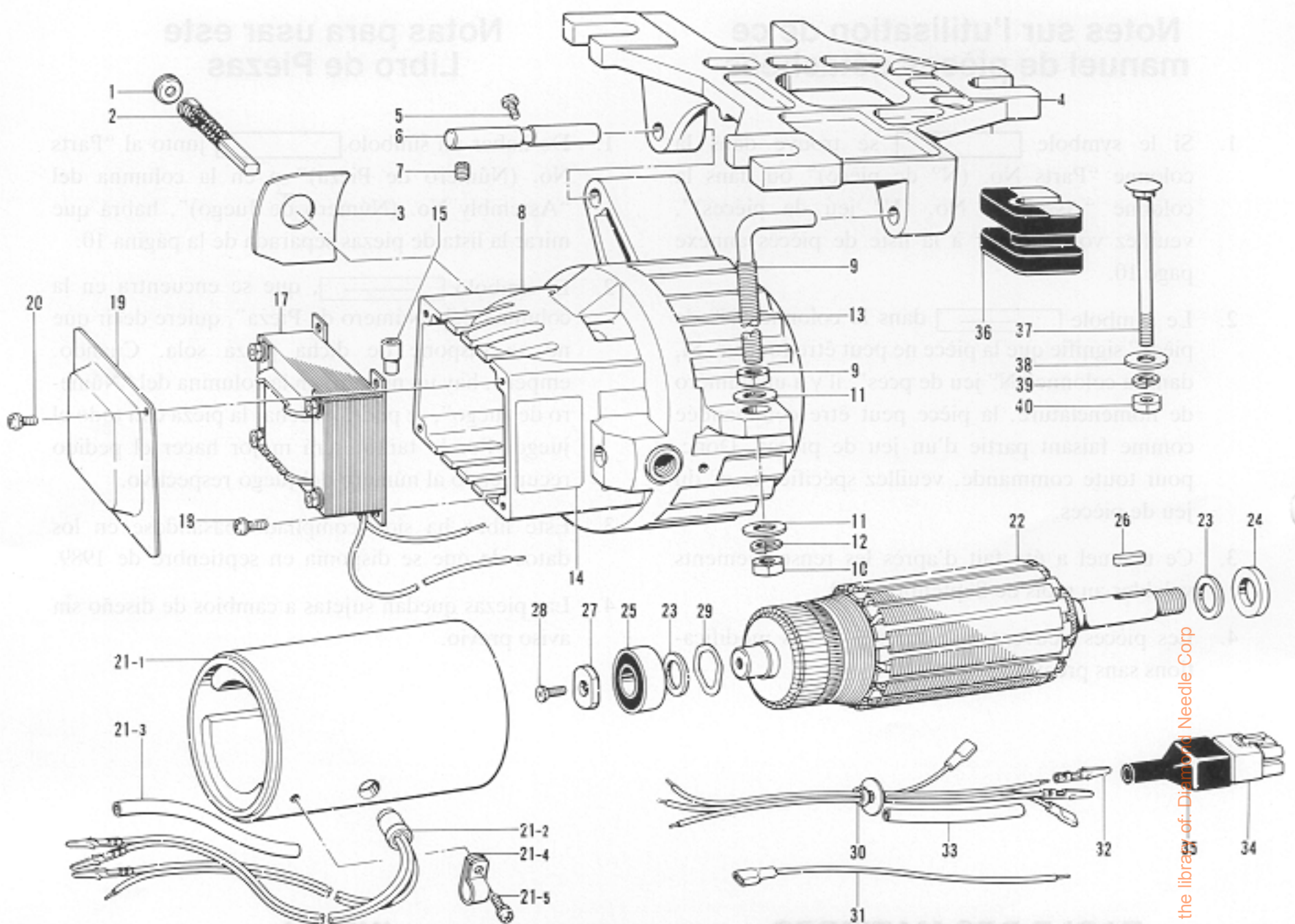


A. Motor Mechanism (1) / Motors (1)  
 Mécanisme du Moteur (1) / Mecanismo del Motor (1)

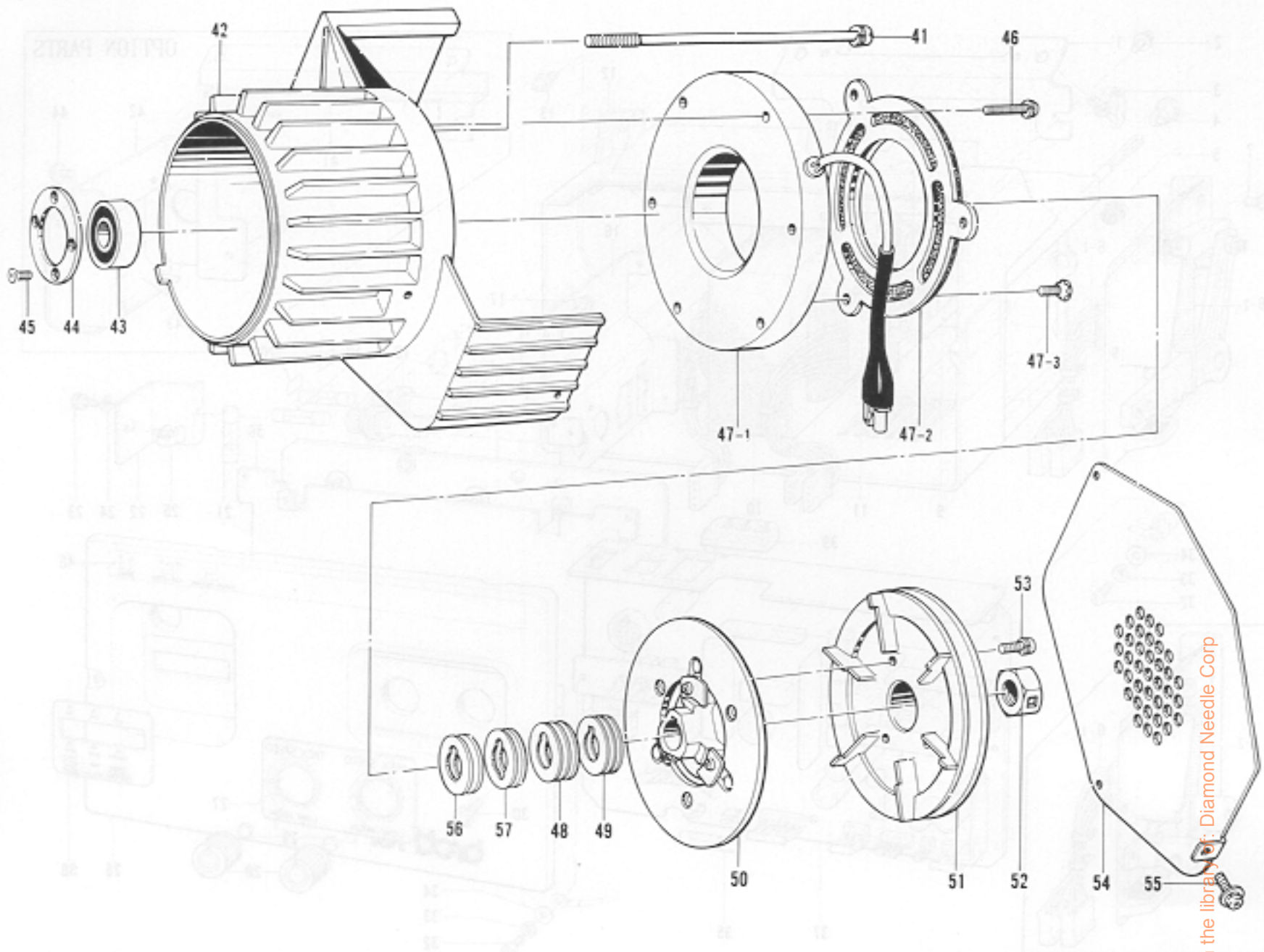


From the library of: Diamond Needle Corp

Ref. No.	Name of Parts	Q'ty	Parts No.	Assembly No.	Ref. No.	Name of Parts	Q'ty	Parts No.	Assembly No.
1	Holder Cap	2	224475-001		21-4	Cord Holder #7	1	224504-001	
2	MD Carbon Brush Assembly	1			21-5	Screw 4X8	1	008400-805	
3	Insulation Sheet	2	224476-000		22	Rotor #145	1		
4	Base	1			23	Washer 2X15X22ST	2	224485-000	
5	Screw 6X10	1	062061-005		24	Washer 2.3X15X28ST	1	224487-000	
6	Pin 9.3X83	1	224540-001		25	Bearing 6202VV #2	1	076202-601	
7	Screw 6X8 #2	2	014060-832		26	Key 5X5X20	1	231008-C01	
8	DC Bracket Assembly (L) #3	1			27	Washer 2.3X6.9X22ST	1	231009-001	
9	Bolt (L) 10	1	210965-061		28	Screw 5X12F	1	214897-001	
10	Nut 2-10	1	021100-206		29	Washer 8.3X27.5X34.9	1	203684-001	
11	Washer 10	2	025100-236		30	Reacted Cord Assembly	1	229930-001	
12	Spring Washer 2-10	1	028100-246		31	Terminal Cord	1	228226-001	
13	MD Motor Assembly	1			32	Plug Pin	1	217133-001	
14	MD Motor Label	1			33	Tube 11X370PV	1	228229-001	
15	Connector #3	2	214808-000		34	6P Plug Pin	1	219582-001	
17	Reactor 35 mh Assembly #2	1	228221-001		35	Plug Cover #11	1	219603-001	
18	Screw 4X10D	4	215080-001		36	Rubber Cushion #5	3	212646-001	
19	Reactor Cover	1	228222-001		37	Bolt 8X85	3	210973-001	
20	Screw 4X8DB	2	216872-001		38	Washer 2.3X8.5X38ST	3	212650-001	
21-1	Yoke Assembly #3	1	230432-001	A-21 Frame Assembly #2	39	Spring Washer 2-8	3	029080-246	
21-2	Thermister #5	1	229335-001	230431-001	40	Nut 2-8	3	021080-206	
21-3	Tube 7X65	1	226671-001						



A. Motor Mechanism (2) / Motors (2)  
 Mécanisme du Moteur (2) / Mecanismo del Motor (2)

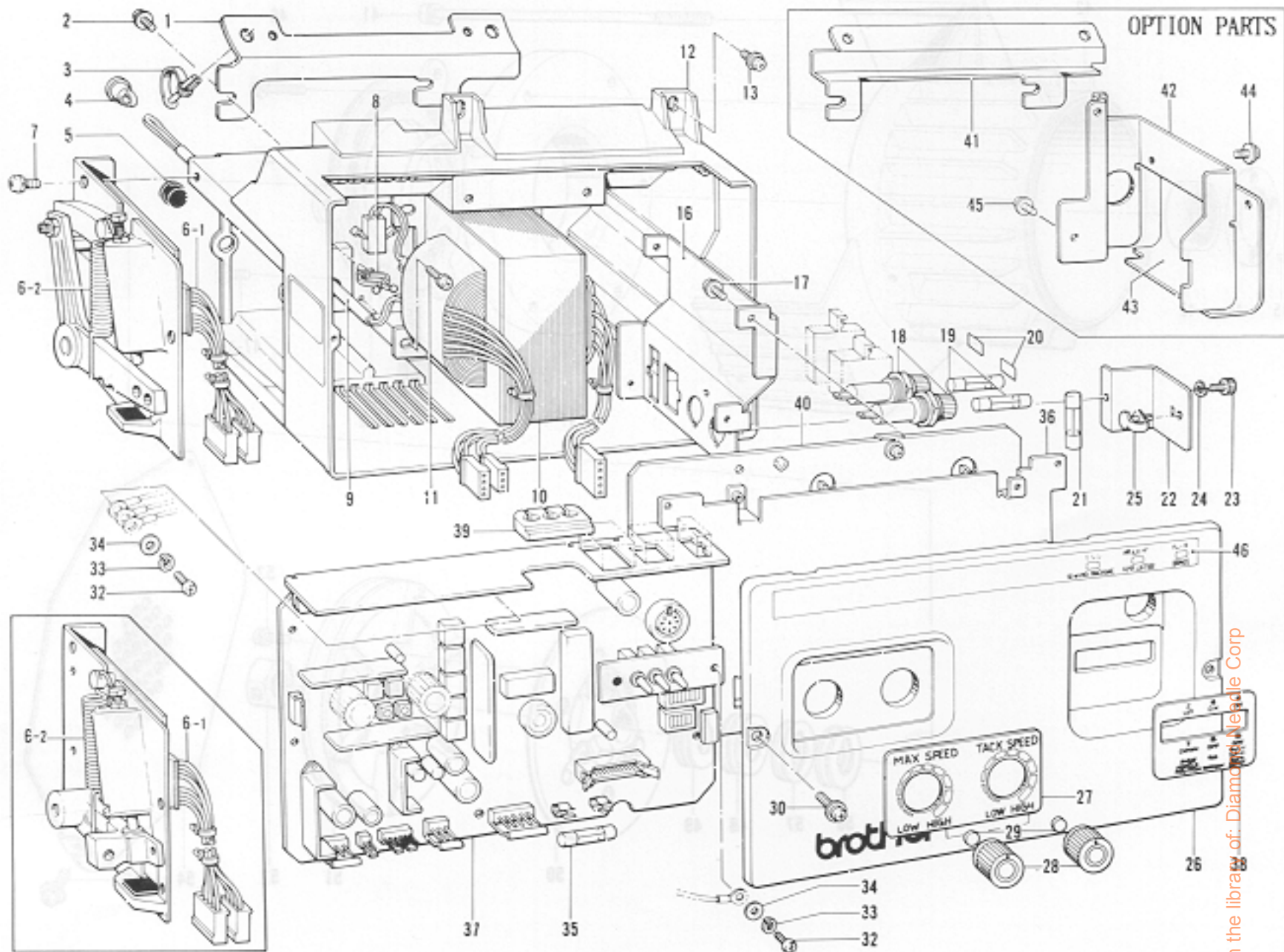


From the library of: Diamond Needle Corp

Ref. No.	Name of Parts	Q'ty	Parts No.	Assembly No.	Ref. No.	Name of Parts	Q'ty	Parts No.	Assembly No.
41	Screw 6X150D	4	228216-001		48	Washer 01X15.1X30ST	4	219517-000	
42	DC Bracket (R) #3	1	230999-001		50	Brake (A10) Amature Assembly #4	1	231013-001	
43	Bearing 6302VV #2	1	076202-601		51	Pully	1		
44	Bearing Washer	1	231060-001		52	Nut 2	1	210240-001	
45	Screw 4X12	4	061401-205		53	Screw 5X12	3	211528-001	
46	Screw 5X20	3	051502-005		54	Belt Cover	1	224507-002	
47-1	Brake (A10) Stator	1	230637-001	A-47 Brake (A10) Stator Assembly 230836-001	55	Screw 4X10DC	3	224508-001	
47-2	Brake (A10) Lining	1	230838-001		56	Washer 012X15.1X30ST	2	231458-001	
47-3	Screw 5X12F	3	214857-001		57	Washer 03X15.1X30ST	2	224503-000	
48	Washer 015X15.1X30ST	4	222753-000						



B. Control Box / Schaltkasten / Mécanisme du boîtier de contrôle:  
 Mecanismo del caja de controles (B737)

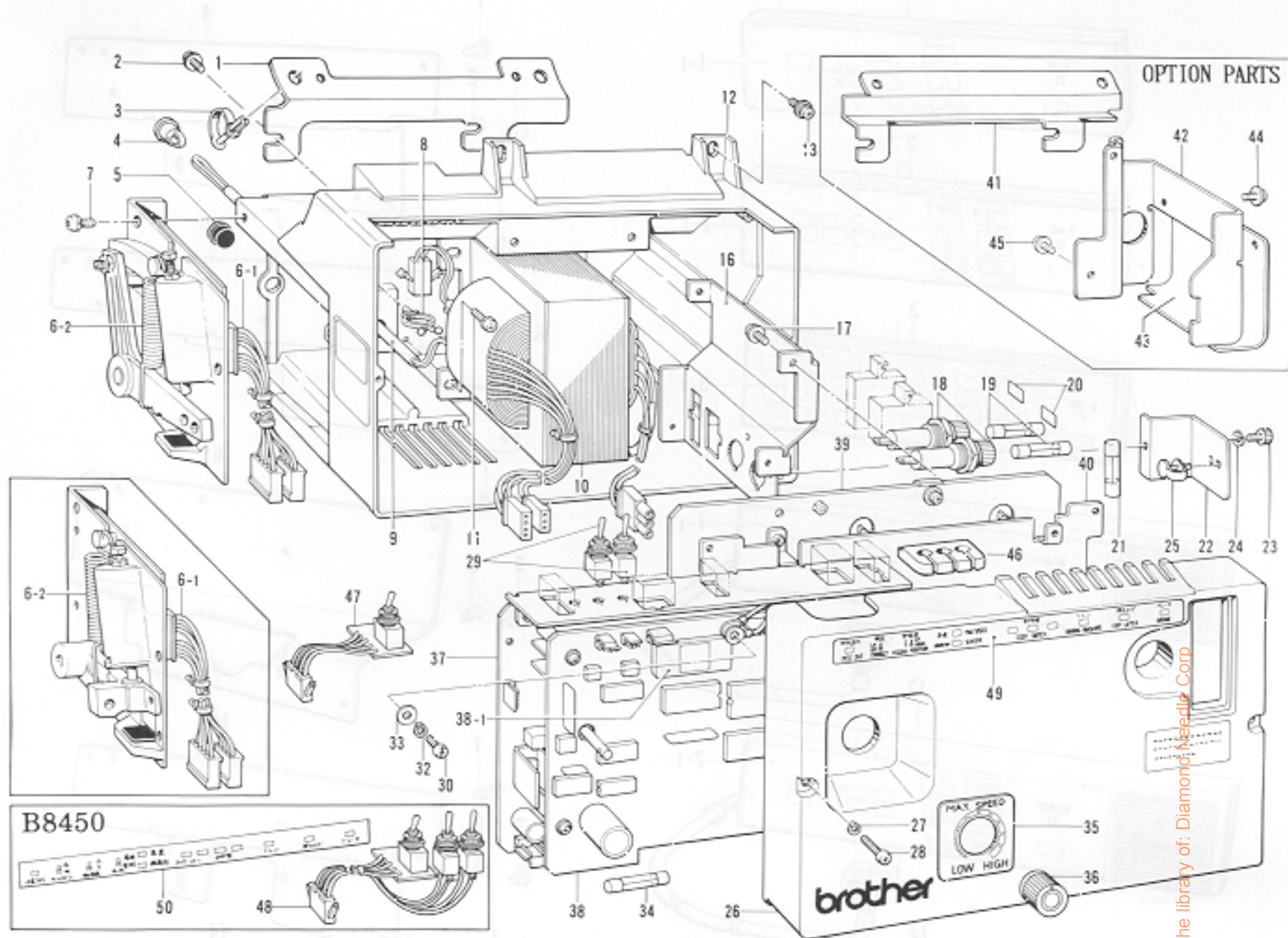


From the library of: Diamond Needle Corp

Ref. No.	Name of Parts	Q'ty	Parts No.	Assembly No.	Ref. No.	Name of Parts	Q'ty	Parts No.	Assembly No.
1	Install Plate #4	1	228277-001		24	Spring Washer 2-4	1	028040-245	
2	Set Screw 5X12B	6	214447-001		25	Lead Clamper	1	216740-001	
3	Lead Clamper #12	2	224091-001		26	Box Cover #3	1	233121-001	
4	Bushing #61	1	215971-001		27	VR Indication Label #2	1	229559-001	
5	Oil Cap	1	104821-001		28	VR Control Knob	2	221024-001	
6-1	P.S Circuit Board	1		B-6 Treadle Unit Assembly #11	29	VR Spacer	2	228324-001	
6-2	Treadle Spring #5	1			30	Screw 4X12D	2	217003-001	
7	Set Screw 5X16D	3	216596-001		32	Screw 4X12	2	062401-263	
8	Perse Rock-16	1			33	Spring Washer 2-4	7	028040-245	
9	Varnish Glass 10X50	1	228284-001		34	Washer 4	2	025040-173	
10	Transformer	1			35	Fuse 8A	1	219225-000	
11	Set Screw 4X8DB	4	216872-001		36	Circuit Setting Plate	1	228294-001	
12	Box	1	228287-001		37	Control Circuit Unit #500B	1		
13	Set Screw 5X12B	2	214447-001		38	Switch Emblem Plate #500	1	233123-001	
16	Connector Bracket	1			39	Cord Bushing	1	233193-001	
17	Set Screw 4X8DB	4	216872-001		40	Power Circuit Unit	1		
18	Fuse Holder Assembly				41	Install Plate #5	1	235902-001	
19	Fuse				42	Conduit Setting Plate	1	235903-001	
20	Label				43	Connector Cover	1	235904-001	
21	Fuse 1A	1	225432-001		44	Screw 4X10DC	2	224508-001	
22	Fuse Cover	1	228280-001		45	Screw 4X10DA	2	229017-001	
23	Bolt 4X8	1	018400-832		46	Seal	1	229558-001	



C. Control Box / Schaltkasten / Mécanisme du boîtier de contrôle:  
Mecanismo del caja de controles (B7380)

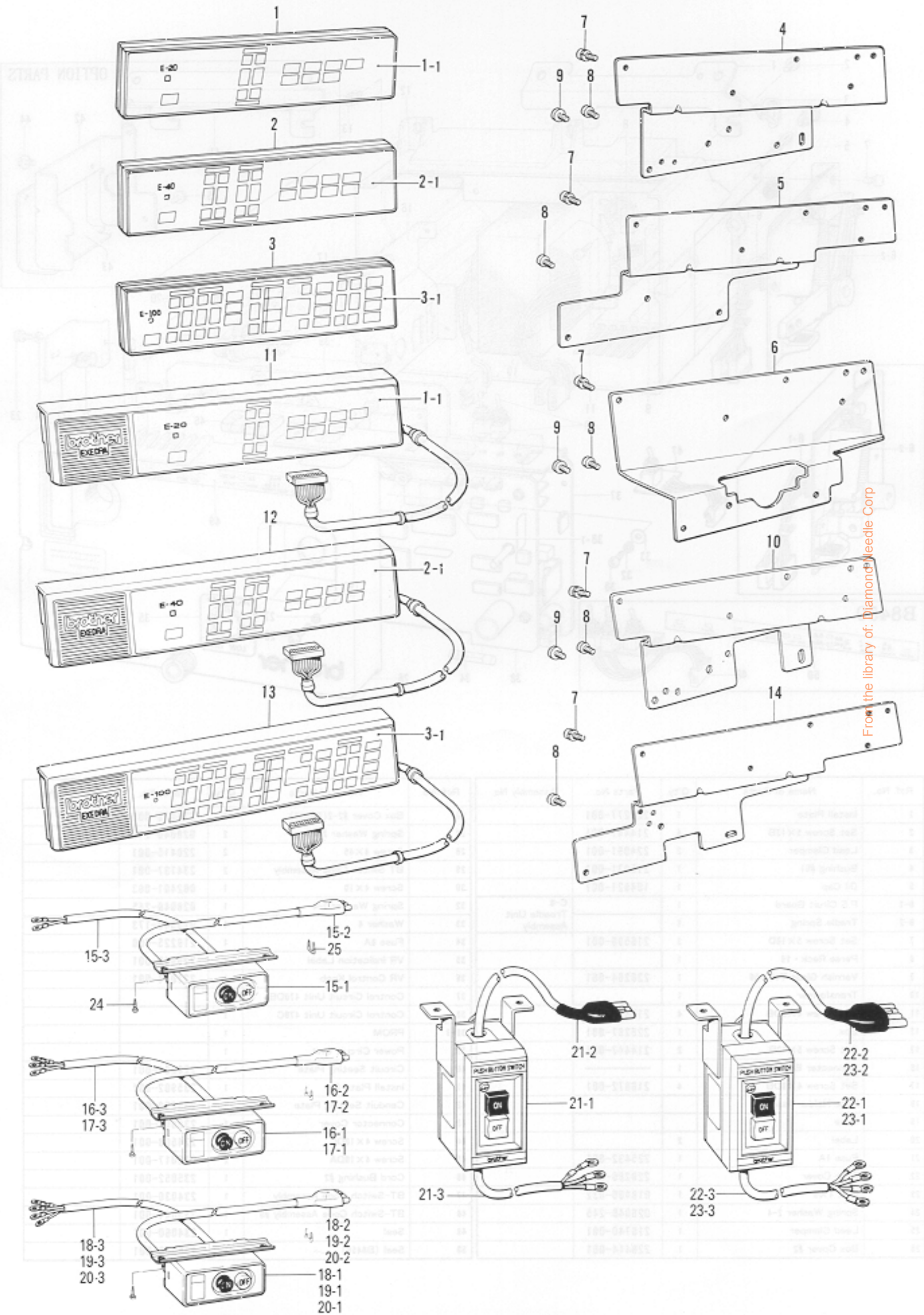


From the library of: Diamond Needle Corp

Ref. No.	Name of Parts	Q'ty	Parts No.	Assembly No.	Ref. No.	Name of Parts	Q'ty	Parts No.	Assembly No.
1	Install Plate	1	228277-001		26	Box Cover #2-2(B8450)	1	235029-001	
2	Set Screw 5X12B	4	214447-001		27	Spring Washer 2-4	2	028040-245	
3	Lead Clamper	2	224091-001		28	Screw 4X45	2	228415-001	
4	Bushing #61	1	215971-001		29	BT Switch Code Assembly	2	234137-001	
5	Oil Cap	1	104821-001		30	Screw 4X10	1	062401-063	
6-1	P.S. Circuit Board	1		C-6 Treadle Unit Assembly	32	Spring Washer 2-4	1	028040-245	
6-2	Treadle Spring	1			33	Washer 4	1	025040-173	
7	Set Screw 5X10D	3	216596-001		34	Fuse 8A	1	219225-000	
8	Perse Reck • 16	1			35	VR Indication Label	1	229943-001	
9	Varnish Glass T10X50	1	228284-001		36	VR Control Knob	1	221024-001	
10	Transformer	1			37	Control Circuit Unit 470DB	1		
11	Set Screw 4X8DB	4	216872-001		38	Control Circuit Unit 470C	1		
12	Box	1	228287-001		38-1	PPOM	1		
13	Set Screw 5X12B	2	214447-001		39	Power Circuit Unit	1		
16	Connector Bracket	1			40	Circuit Seating Plate	1	228294-001	
17	Set Screw 4X8DB	4	216872-001		41	Install Plate #5	1	235902-001	
18	Fuse Holder Assembly				42	Conduit Setting Plate	1	235903-001	
19	Fuse				43	Connector Cover	1	235904-001	
20	Label	2			44	Screw 4X10DC	2	224508-001	
21	Fuse 1A	1	225432-001		45	Screw 4X10DA	2	229017-001	
22	Fuse Cover	1	228280-001		46	Cord Bushing #2	1	235052-001	
23	Bolt 4X8	1	018400-832		47	BT-Switch Code Assembly	1	234030-001	
24	Spring Washer 2-4	1	028040-245		48	BT-Switch Code Assembly #9	1	235044-001	
25	Lead Clamper	1	216740-001		49	Seal	1	234060-001	
26	Box Cover #2	1	228414-001		50	Seal (B8450)	1	235009-001	



D. Operation panel and Switch Box Mechanism / Schaltkasten  
 Boîtier d'interrupteurs / Caja de interruptores





Ref. No.	Name of Parts	Q'ty	Parts No.	Assembly No.	Ref. No.	Name of Parts	Q'ty	Parts No.	Assembly No.
1	E-20 Operation Panel	1	*		17-1	2P Switch #19	1	225539-001	17
1-1	HB-Plate	1	233085-001		17-2	3P Plug Assembly #10-3	1	230543-001	2P Switch Assembly #19-4 230542-001
2	E-40 Operation Panel	1	*		17-3	Electric Supply Cord	1	230544-001	
2-1	HB-Plate	1	233079-001		18-1	3P Switch #11	1	224510-001	18
3	E-100 Operation Panel	1	*		18-2	4P Plug Assembly #11-3	1	229245-001	2P Switch Assembly #11-6 229244-001
3-1	HBFDCA Assembly 100-1	1	233074-001		18-3	Electric Cord #5	1	229246-001	
4	HB-Setting Plate #1	1	233086-001		19-1	3P Switch #11	1	224510-001	19
5	HB-Setting Plate #3	1	233090-001		19-2	4P Plug Assembly #11	1	228272-001	3P Switch Assembly #11-7 239250-001
6	HB-Setting Plate #4	1	233576-001		19-3	Electric Supply Cord #3	1	224513-001	
7	Screw 4X12DA	1	215082-002		20-1	3P Switch #11	1	224510-001	20
8	Screw 4X12	1	062681-212		20-2	4P Plug Assembly #11-5	1	230546-001	3P Switch Assembly #11-8 230545-001
9	Screw 357-40X12	3	060671-212		20-3	Electric Supply Cord	1	230547-001	
10	HB-Setting Plate #2	1	233089-001		21-1	2P Switch #16	1	223739-001	21
11	E-20 Operation Panel	1	*		21-2	3P Plug Assembly #10-4	1	235533-001	2P Switch Assembly #16-2 230548-001
12	E-40 Operation Panel	1	*		21-3	Electric Supply Cord	1	235534-001	
13	E-100 Operation Panel	1	*		22-1	3P Switch #9-3	1	223738-001	22
14	HB Setting Plate #5	1	234588-001		22-2	4P Plug Assembly #11-4	1	230444-001	3P Switch Assembly #9-11 230443-001
15-1	2P Switch #19	1	225539-001	15	22-3	Electric Supply Cord	1	230445-001	
15-2	3P Plug Assembly #10	1	228243-001	2P Switch Assembly #19-3 229240-001	23-1	3P Switch #9	1	215504-001	23
15-3	Electric Supply Cord	1	229241-001		23-2	4P Plug Assembly #11-6	1	230550-001	3P Switch Assembly #9-12 230549-001
16-1	2P Switch #16	1	225539-001	16	23-3	Electric Supply Cord #7	1	230551-001	
16-2	3P Plug Assembly #10-2	1	229238-001	2P Switch Assembly #19-2 229237-001	24	Screw 45X16	2	S03816-001	
16-3	Electric Supply Cord #2	1	229239-001		25	Staple	5	200190-001	

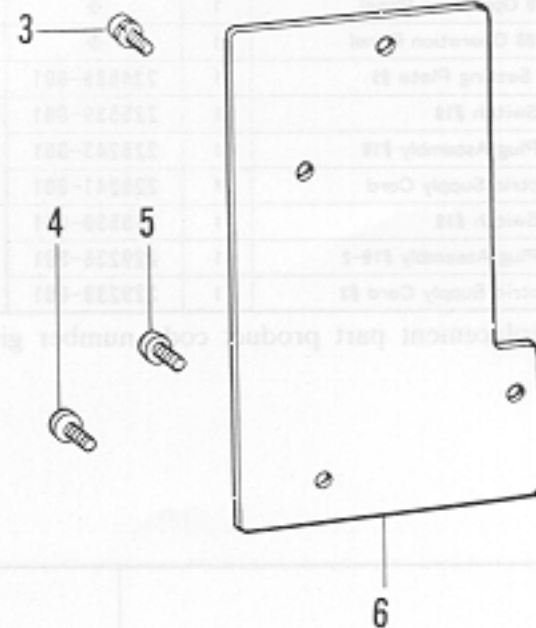
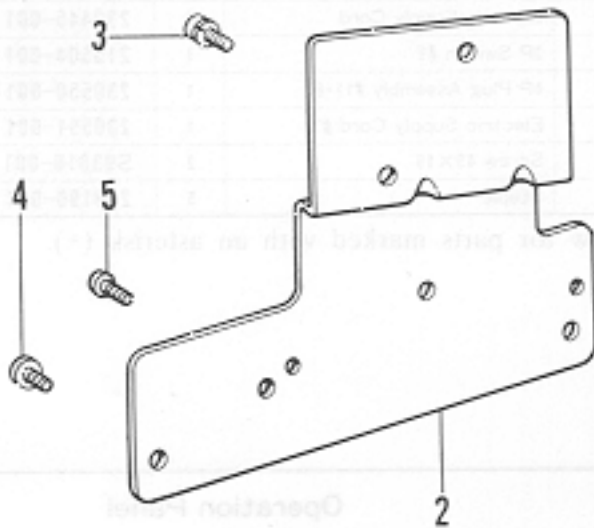
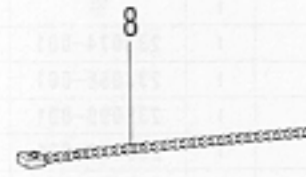
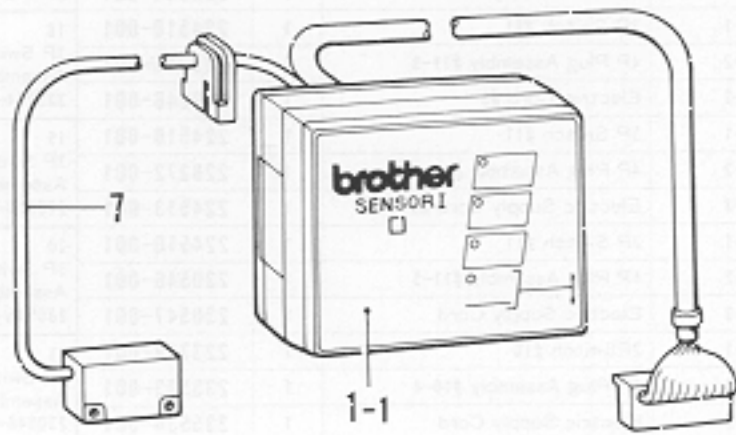
\* Use the replacement part product code number given in the table below for parts marked with an asterisk (\*).

Machine Model	Ref. No.	Operation Panel	
		E-20	Supply Parts No.
B737 Mark II	D-11	E-20	137-208-911-11
	D-12	E-40	137-208-912-11
	D-13	E-100	137-208-913-11
B748,791,791-003,798 B774,795,795-015 B842,872(Twin Needle) B852,853,854	D-1	E-20	137-208-911-20
	D-2	E-40	137-208-912-20
	D-3	E-100	137-208-912-20

From the library of: Diamond Needle Corp

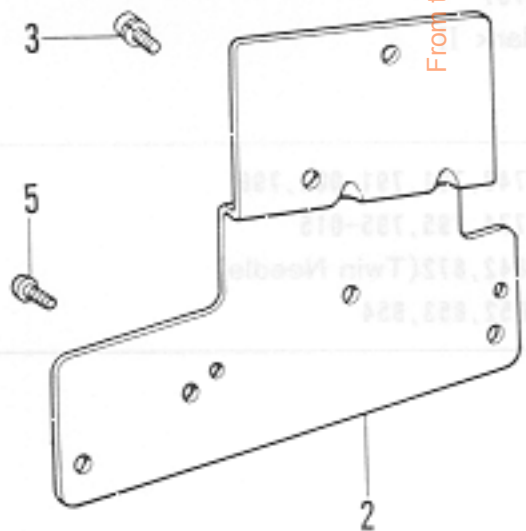
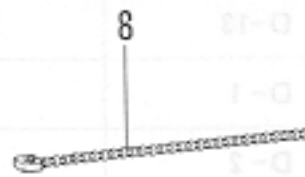
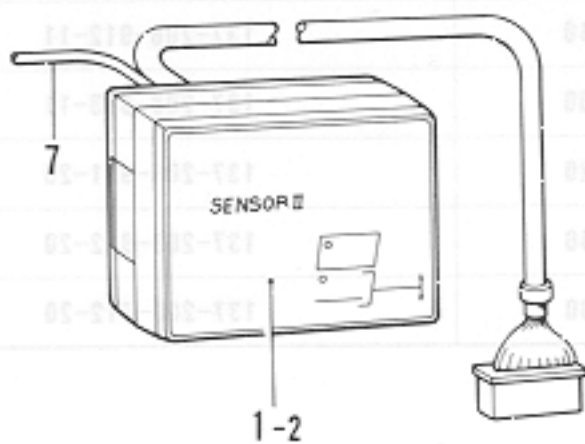
E. Material Edge Sensor Related (Option) (1) /  
 Für Materialkantensensor (Sonderausstattung) (1) /  
 Capteur de bord de tissu relatif (en option) (1) /  
 Piezas relacionadas al detector de borde de tejidos (opcional) (1)

Sensor I

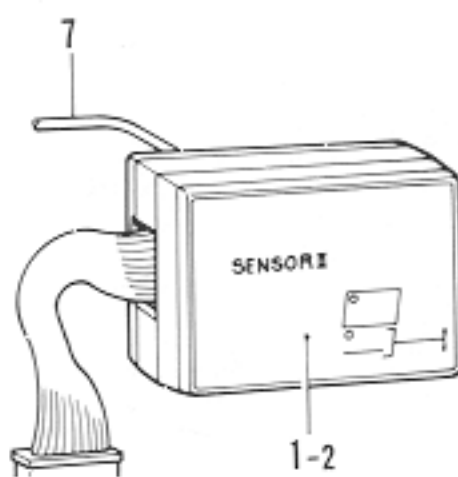


From the library of: Diamond Needle Corp

Sensor II (Mark II)



Sensor II





Sensor I

Ref. No	Machine Model		Mark II B748	For (Twin Needle)	B791	B793, 774	B798
	Name of Parts	Name of Sensor					
			#1-1	#1-3	#1-4	#1-5 #1-7	#1-6
1-1	Emblem Plate	233258-001					
7	Sensor Cord Assembly	233263-001		233263-001	233619-001	233263-001	233263-001
3	Screw 4X12DA	215082-002					
2	Setting Plate	233093-001		233093-001	233093-001	—	233093-001
6	Setting Plate	—		—	—	233603-001	—
4	Screw 357-40X12	—		—	060671-212 (Old)	060671-212 (B793)	060671-212
5	Screw 437-40X12	062681-212		062681-212	062681-212 (New)	062681-212 (B774)	—
8	Band N-108	233501-001					

Sensor II

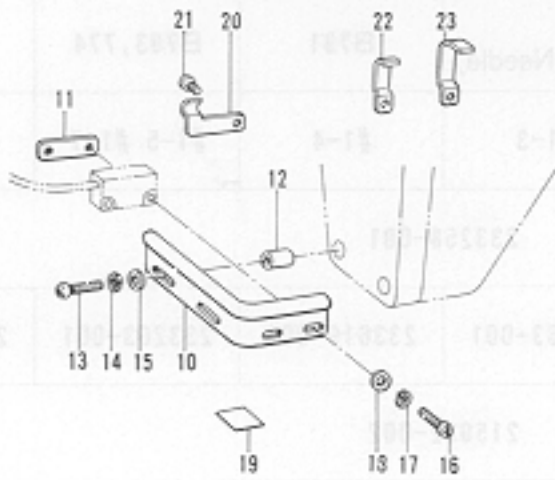
Ref. No	Machine Model		Mark II B748	For (Twin Needle)	B791	B793, 774	B798	
	Name of Parts	Name of Sensor						
			#2-2	#2-1	#2-3	#2-4	#2-5 #2-7	#2-6
1-2	Emblem Plate	233268-001						
7	Sensor Cord Assembly	233263-001	233263-001	233263-001	233619-001	233619-001	233263-001	
2	Setting Plate	233093-001			—	—	—	
3	Screw 4X12DA	—			015062-002			
4	Screw 357-40X12	—		—	060671-212 (Old)	060671-212 (Old)	060671-212	
5	Screw 437-40X12	062681-212		062681-212	062681-212 (New)	062681-212 (B774)	—	
8	Band N-108	233501-001						

From the library of: Diamond Needle Corp

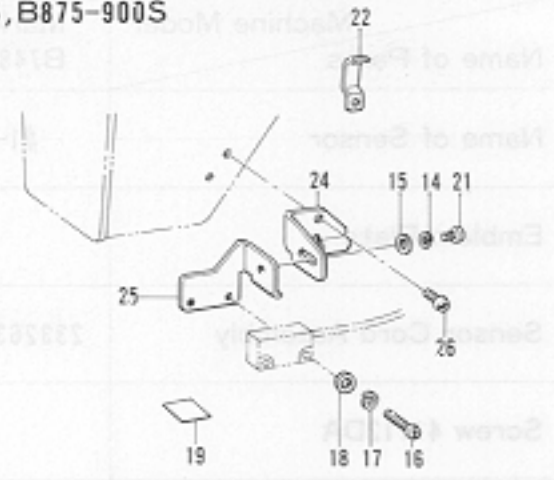


F. Material-Edge Sensor Related (option) (2) /  
 Für Materialkantensensor (Sonderausstattung) (2) /  
 Capteur de bord de tissu relatif (en option) (2) /  
 Piezas relacionadas al detector de borde de tejidos (opcional) (2)

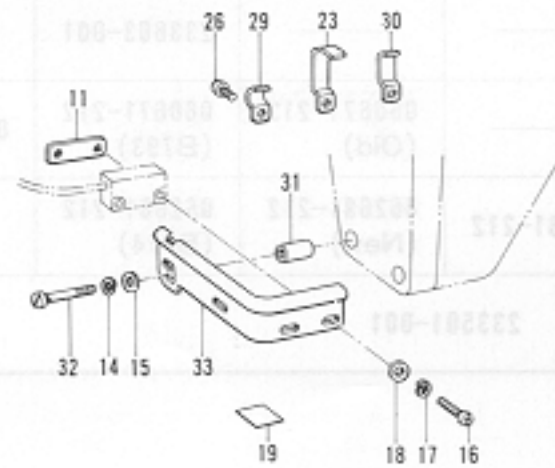
Sensor #1-1,1-2,2-1,2-2,B737,Mark II,748



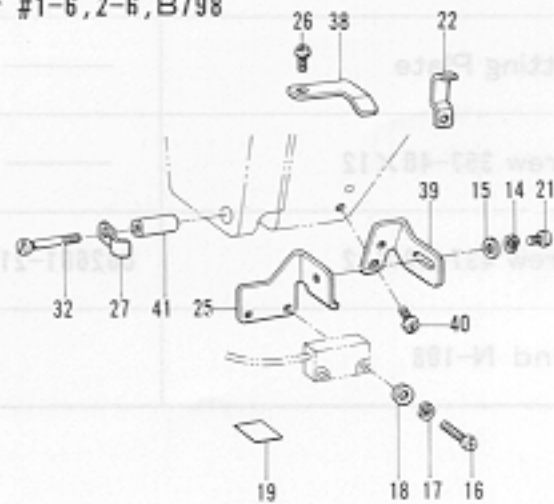
Sensor #1-3,2-3,B842,845,847,848,872,875,  
B845-900S,B875-900S



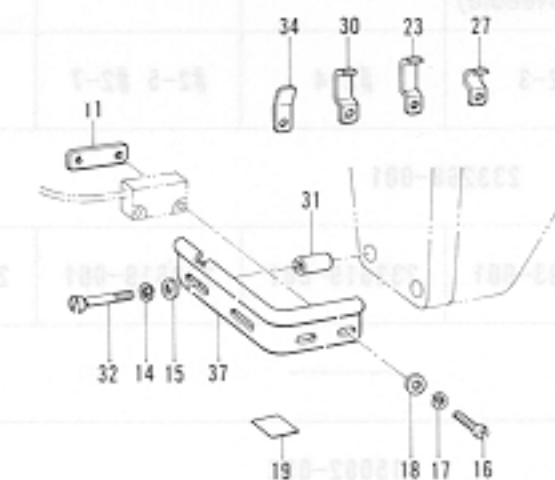
Sensor #1-4,2-4,B791



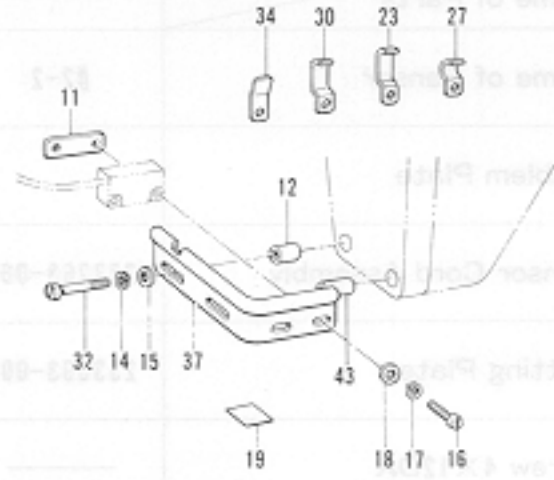
Sensor #1-6,2-6,B798



Sensor #1-5,2-5,B793,795



Sensor #1-7 #2-7, B774



From the library of: Diamond Needle Corp

Ref. No.	Name of Parts	Q'ty	Parts No.	Assembly No.	Ref. No.	Name of Parts	Q'ty	Parts No.	Assembly No.
10	Sensor Plate	1	233001-001		25	Sensor Setting Plate (#3)	1	233544-001	
11	Sensur Setting	1	233092-001		26	Screw 437 X 8	2	062680-812	
12	Sensor Setting Plate Collar	2	233067-001		27	Cord Holder (U1)	2	S02701-001	
13	Screw 357 X 20	2	062672-012		29	Cord Holder (#2)	1	233604-001	
14	Spring Washer 2-3.5	2	028350-242		30	Cord Holder (L)	2	142268-001	
15	Washer 3.5	2	026350-132		31	Sensor Setting Collar (#2)	2	233575-001	
16	Screw 3 X 14	2	062301-402		32	Screw 3.57	2	151431-001	
17	Spring Washer 2-3	2	028030-242		33	Sensor Plate (#791)	1	233573-001	
18	Washer 3	2	025033-132		34	Cord Holder (#3)	1	233618-001	
19	Alumi Sheet	1	233063-001		37	Sensor Plate (#793)	1	233574-001	
20	Cord Holder	1	233500-001		38	Cord Holder (#4)	1	233696-001	
21	Screw 357 X 8	1	062670-612		39	Sensor Plate (#798)	1	233694-001	
22	Cord Holder (U2)	2	S02702-001		40	Screw 357 X 8	1	062670-812	
23	Cord Holder (U3)	2	S02703-001		41	Sensor Setting Collar (#3)	1	233695-001	
24	Sensor Holder (A)	1	233545-001		43	Sensor Setting Collar 175	1	236315-001	



DIFFERENT PARTS LIST / ZUBEHORLISTE  
LISTE DES PIECES ACCESSOIRES / LISTA DE PIEZAS ACCESORIAS

Machine Model		Mark II								
Ref.No.	Sub-Class	Single Phase					Three Phase			
		110	120	220	230	240	220	380	415	
A-2	Carbon Brush Assembly	231556-001					231558-001			
A-4	Base			224495-002 235560-001	225938-002 225938-003 (Hong-Kong)					
A-8	Bracket Assembly (L) #3	231001-001					231003-001			
A-13	DC.Motor Assembly	291823-001 (C)		388113-001 (A2)	388574-001 (A)	388584-001 (A4)	389575-001 (A)	388576-001 (B)	388120-001 (B2)	
A-22	Rotor	231646-001		231004-001			231018-001			
A-51	Pulley	228840-000 M 80-1								
		228237-001 M 90-1								
		228839-001 M105-2								
		231017-001 M125-2								
B C-6	Treadle Unit Assembly #11	291790-001								
B C-6-1	Circuit Board #11	291792-001								
B C-6-2	Treadle Spring #11	231080-001								
B C-6	Treadle Unit Assembly #10	291789-001				291789-001				
B C-6-1	Circuit Board #10	291791-001				291791-001				
B C-6-2	Treadle Spring #10	236207-001				236207-001				
B C-8	Perse Rock-16	228290-001					229224-001			
B C-10	Trans fomer	6V	229963-001	236126-001	229643-001	229645-001	229646-001	229643-001	229561-001	230214-001
		12V			230660-001		231335-001	230660-001	229623-001	229644-001
B C-18	Fuse Holer Assembly	225433-001(Q'ty1)					224087-001 (Q'ty2)			
B C-19	Fuse	218469-001 (15A)(Q'ty1)	219225-001 (8A)(Q'ty1)		215822-001 (5A)(Q'ty2)	215769-001 (3A)(Q'ty2)				
B C-20	Label	224090-001	233638-001			224089-001	229160-001			
B C-37	Control Circuit Unit	291782-110	291782-123			291782-323	291782-340			
C-38	Control Circuit Unit									
B-40 C-39	Power Circuit Unit	291273-101	388662-101	291274-101			291275-101	291276-101		
D-15 D-23	Switch Assembly	229240-001		229237-001			229250-001	229244-001		
		230548-001 (USA)				236127-001 (Australia)	230443-001 (OCR)	230549-001 (OCR)		
		230542-001 (Canada)					230545-001 (Canada)			

From the library of: Diamond Needle Corp



Machine Model		B7380								
Ref.No.	Sub-Class	Single Phase				Three Phase				
		110	220	230	240	220	380	415		
A-2	Carbon Brush Assembly	231556-001				231558-001				
A-4	Base	224495-002 235560-001		225938-002 225938-003 (Hong-Kong)						
A-8	Bracket Assembly (L) #3	231001-001				231003-001				
A-13	DC.Motor Assembly	291823-001 (C)	388113-001 (A2)	388574-001 (A)	388584-001 (A4)	388575-001 (A)	388576-001 (B)	388120-001 (B2)	388663-001 (A4)	388585-001 (B4)
A-22	Rotor	231646-001	231004-001				231018-001			
A-51	Pulley	228237-001 M 90-1								
		231017-001 M125-2								
B C-6	Treadle Unit Assembly #8	291442-001								
B C-6-1	Circuit Board #8	291443-001								
B C-6-2	Treadle Spring #8	231080-001								
B C-6	Treadle Unit Assembly #7	291281-001		—		291281-001		—		
B C-6-1	Circuit Board #7	291282-001		—		291282-001		—		
B C-6-2	Treadle Spring #7	236297-001		—		236297-001		—		
B C-8	Perse Rock-16	228290-001				229224-001				
B C-10	Trans fomer	6V	229546-001	229218-001	229222-001	229223-001	229218-001	229219-001	230435-001	
		12V	—	230661-001	—	231336-001	230661-001	229220-001	229221-001	
B C-18	Fuse Holer Assembly	225433-001(Q'ty1)				224087-001 (Q'ty2)				
B C-19	Fuse	218469-001 (5A)(Q'ty1)	219225-001 (8A)(Q'ty1)		215822-001 (5A)(Q'ty2)		215769-001 (3A)(Q'ty2)			
B C-20	Label	224096-001	233638-001		224089-001		229160-001			
B C-37	Control Circuit Unit	291786-110	291786-123		291786-323		291786-340			
C-38	Control Circuit Unit	291788-001								
C-38-1	PROM	234032-001(A25A)								
B-40 C-39	Power Circuit Unit	291273-101	291274-101		291275-101		291276-101			
D-15 D-23	Switch Assembly	229240-001	229237-001		229250-001		229244-001			
		230548-001 (USA)	—		236127-001 (Australia)	230443-001 (OCR)		230549-001 (OCR)		
		230542-001 (Canada)	—		230545-001 (Canada)		—			

From the library of: Diamond Needle Corp



Machine Model		B7910							
Ref.No.	Sub-Class	Single Phase				Three Phase			
	Voltage (V)	110	220	230	240	220	360	415	
A-2	Carbon Brush Assembly	231556-001				231558-001			
A-4	Base	224495-002 235560-002		225938-002 225938-003 (Hong-Kong)					
A-8	Bracket Assembly (L) #3	231001-001				231003-001			
A-13	DC.Motor Assembly	291823-001 (C)	388113-001 (A2)	388574-001 (A)	388584-001 (A4)	388575-001 (A)	388576-001 (B)	383120-001 (B2)	388585-001 (B4)
A-22	Rotor	231646-001	231004-001				231018-001		
A-51	Pulley	228237-001 M 90-1							
		231017-001 M125-2							
B C-6	Treadle Unit Assembly #8	291442-001							
B C-6-1	Circuit Board #8	291443-001							
B C-6-2	Treadle Spring #8	231080-001							
B C-6	Treadle Unit Assembly #7	291281-001		—		291281-001		—	
B C-6-1	Circuit Board #7	291282-001		—		291282-001		—	
B C-6-2	Treadle Spring #7	236207-001		—		235207-001		—	
B C-8	Perse Rock-16	228290-001				229224-001			
B C-10	Transformer	6V	229946-001	229218-001	229222-001	229223-001	229218-001	229219-001	230435-001
		12V	—	230661-001	—	231336-001	230661-001	229220-001	229221-001
B C-18	Fuse Holder Assembly	225433-001 (Q'ty1)				224087-001 (Q'ty2)			
B C-19	Fuse	218469-001 (15A) (Q'ty1)	219225-001 (8A) (Q'ty1)		215822-001 (5A) (Q'ty2)		215769-001 (3A) (Q'ty2)		
B C-20	Label	224090-001	233638-001		224089-001		229160-001		
B C-37	Control Circuit Unit	291786-110	291786-123		291786-323		291786-340		
C-38	Control Circuit Unit	388255-001							
C-38-1	PROM	234634-001 (A25E)							
B-40 C-39	Power Circuit Unit	291273-101	291274-101		291275-101		291276-101		
		229240-001	229237-001		229250-001		229244-001		
D-15 D-23	Switch Assembly	230543-001 (USA)	—		236127-001 (Australia)	230443-001 (OCR)		230549-001 (OCR)	
		230542-001 (Canada)	—		230545-001 (Canada)		—		

From the library of: Diamond Needle Corp



Machine Model		B7740							
Ref.No.	Sub-Class	Single Phase				Three Phase			
		110	220	230	240	220	380	415	
A-2	Carbon Brush Assembly	231556-001				231558-001			
A-4	Base	224495-002 235560-001		225938-002 225938-003 (Hong-Kong)					
A-8	Bracket Assembly (L) #3	231001-001				231003-001			
A-13	DC.Motor Assembly	291823-001 (C)	388113-001 (A2)	388574-001 (A)	388584-001 (A4)	388575-001 (A)	388576-001 (B)	388120-001 (B2)	388585-001 (B4)
A-22	Rotor	231616-001	231004-001				231018-001		
A-51	Pulley	228237-001 M 90-1							
		228840-001 M105-2							
B C-6	Treadle Unit Assembly #8	291442-001							
B C-6-1	Circuit Board #8	291443-001							
B C-6-2	Treadle Spring #8	231080-001							
B C-6	Treadle Unit Assembly #7	291281-001		—		291281-001		—	
B C-6-1	Circuit Board #7	291282-001		—		291282-001		—	
B C-6-2	Treadle Spring #7	236207-001		—		236207-001		—	
B C-8	Perse Rock-16	228290-001				229224-001			
B C-10	Trans fomer	6V	229946-001	229218-001	229222-001	225223-001	229218-001	229219-001	230435-001
		12V	—	230661-001	—	231336-001	230661-001	229220-001	229221-001
B C-18	Fuse Holer Assembly	225433-001 (Q'ty1)				224087-001 (Q'ty2)			
B C-19	Fuse	218469-001 (15A)(Q'ty1)	219225-001 (8A)(Q'ty1)		215822-001 (5A)(Q'ty2)		215759-001 (3A)(Q'ty2)		
B C-20	Label	224090-001	233638-001		224089-001		229160-001		
B C-37	Control Circuit Unit	291786-110	291786-123		291786-323		291786-340		
C-38	Control Circuit Unit	388256-001							
C-38-1	PROM	235039-001 (A25H)							
B-40 C-39	Power Circuit Unit	291273-101	291274-101		291275-101		291276-101		
D-15 D-23	Switch Assembly	229240-001	229237-001		229250-001		225244-001		
		230548-001 (USA)	—		236127-001 (Australia)	230443-001 (OCR)		230549-001 (OCR)	
		230542-001 (Canada)	—		230545-001 (Canada)		—		

From the library of: Diamond Needle Corp



Machine Model		B8450							
Ref.No.	Sub-Class	Single Phase				Three Phase			
	Voltage (V)	110	220	230	240	220	380	415	
A-2	Carbon Brush Assembly	231556-001				231558-001			
A-4	Base	224495-002 235560-001		225938-002 225938-003 (Hong-Kong)					
A-8	Bracket Assembly (L) #3	231601-001				231003-001			
A-13	DC.Motor Assembly	291823-001 (C)	388113-001 (A2)	388574-001 (A)	388584-001 (A4)	388575-001 (A)	388576-001 (B)	388120-001 (B2)	
			388114-001 (A3) (Hong-Kong)		388663-001 (A4)	388585-001 (B4)			
A-22	Rotor	231646-001	231004-001				231018-001		
A-51	Pulley	228840-000 M 80-1							
B C-6	Treadle Unit Assembly #8	291442-001							
B C-6-1	Circuit Board #8	291443-001							
B C-6-2	Treadle Spring #8	231080-001							
B C-6	Treadle Unit Assembly #7	291281-001		—		291281-001		—	
B C-6-1	Circuit Board #7	291282-001		—		291282-001		—	
B C-6-2	Treadle Spring #7	236207-001		—		236207-001		—	
B C-8	Perse Rock-16	228290-001				229224-001			
B C-10	Trans fomer	6V	229946-001	229218-001	229222-001	229223-001	229218-001	229219-001	230435-001
		12V	—	230661-001	—	231336-001	235520-001	229220-001	229221-001
B C-18	Fuse Holer Assembly	225433-001 (Q'ty1)				224087-001 (Q'ty2)			
B C-19	Fuse	218469-001 (5A) (Q'ty1)	219225-001 (8A) (Q'ty1)		215822-001 (5A) (Q'ty2)		215769-001 (3A) (Q'ty2)		
B C-20	Label	224090-001	233638-001		224089-001		229160-001		
B C-37	Control Circuit Unit	388259-110	388259-123		388259-323		388259-340		
C-38	Control Circuit Unit	388257-001							
C-38-1	PROM	235041-001 (A30E)							
B-40 C-39	Power Circuit Unit	291273-101	291274-101		291275-101		291276-101		
D-15 D-23	Switch Assembly	229240-001	229237-001		229250-001		229244-001		
		230548-001 (USA)	—		236127-001 (Australia)	230443-001 (OCR)		230543-001 (OCR)	
		230542-001 (Canada)	—		230545-001 (Canada)		—		

From the library of: Diamond Needle Corp



Machine Model		B845-900S							
Ref.No.	Sub-Class	Single Phase				Three Phase			
	Voltage (V)	110	220	230	240	220	380	415	
A-2	Carbon Brush Assembly	231556-001				231558-001			
A-4	Base	224495-002 235560-001		225938-002 225938-003 (Hong-Kong)					
A-8	Bracket Assembly (L) #3	231001-001				231003-001			
A-13	DC.Motor Assembly	291823-001 (C)	388113-001 (A2)	388574-001 (A)	388584-001 (A4)	388575-001 (A)	388576-001 (B)	388120-001 (B2)	388585-001 (B4)
A-22	Rotor	231646-001	231006-001				231018-001		
A-51	Pulley	228840-001 M 80-1							
B C-6	Treadle Unit Assembly #11	291790-001							
B C-6-1	Circuit Board #11	291792-001							
B C-6-2	Treadle Spring #11	231080-001							
B C-6	Treadle Unit Assembly #10	291789-001		—		291789-001		—	
B C-6-1	Circuit Board #10	291791-001		—		291791-001		—	
B C-6-2	Treadle Spring #10	236207-001		—		236207-001		—	
B C-8	Perse Rock-16	228290-001				229224-001			
B C-10	Trans fomer	6V	229963-001	229643-001	229645-001	229646-001	229643-001	229561-001	230214-001
		12V	—	230660-001	—	231335-001	230660-001	229623-001	229644-001
B C-18	Fuse Holer Assembly	225433-001(Q'ty1)				224087-001 (Q'ty2)			
B C-19	Fuse	218469-001 (15A)(Q'ty1)	219225-001 (8A)(Q'ty1)		215822-001 (5A)(Q'ty2)		215769-001 (3A)(Q'ty2)		
B C-20	Label	224090-001	233638-001		224089-001		229160-001		
B C-37	Control Circuit Unit	388260-110		388260-123		388260-323		388260-340	
C-38	Control Circuit Unit	—							
B-40 C-39	Power Circuit Unit	291273-101	291274-101		291275-101		291276-101		
D-15 D-23	Switch Assembly	229240-001		229237-001		229250-001		229244-001	
		230548-001 (USA)	—		236127-001 (Australia)	236443-001 (OCR)		239549-001 (OCR)	
		230544-001 (Canada)	—		—		230545-001 (Canada)		—

From the library of: Diamond Needle Corp



Machine Model		ET							
Ref.No.	Sub-Class	Single Phase				Three Phase			
		110	220	230	240	220	380	415	
A-2	Carbon Brush Assembly	231556-001				231558-001			
A-4	Base	224495-002(2)		235560-001(4)					
A-8	Bracket Assembly (L) #3	231001-001				231003-001			
A-13	DC.Motor Assembly	388123-001 (C2)	388663-001 (A4)		388119-001 (A2)		388120-001 (B2)		
			388584-001 (A4)		388663-001 (A4)		388585-001 (B4)		
A-22	Rotor	231646-001	231004-001				231016-001		
A-51	Pulley	228840-000 M 80-1							
		228237-001 M 90-1							
		228839-001 M105-2							
		231017-001 M125-2							
B C-6	Treadle Unit Assembly #11	291790-001							
B C-6-1	Circuit Board #11	291792-001							
B C-6-2	Treadle Spring #11	231080-001							
B C-6	Treadle Unit Assembly #10	291789-001		—		291789-001		—	
B C-6-1	Circuit Board #10	291791-001		—		291791-001		—	
B C-6-2	Treadle Spring #10	236207-001		—		236207-001		—	
B C-8	Perse Rock-16	228290-001					229224-001		
B C-10	Trans fomer	6V	229963-001	229643-001	229645-001	229646-001	229643-001	229561-001	230214-001
		12V	—	230660-001	—	231335-001	230660-001	229623-001	229644-001
B C-18	Fuse Holer Assembly	225433-001(Q'ty1)				224087-001 (Q'ty2)			
B C-19	Fuse	218469-001 (15A)(Q'ty1)	219225-001 (8A)(Q'ty1)		215822-001 (5A)(Q'ty2)		215769-001 (3A)(Q'ty2)		
B C-20	Label	224090-001	233638-001		224089-001		229160-001		
B C-37	Control Circuit Unit	388250-110	388250-123		388250-323		388250-340		
C-38	Control Circuit Unit	—							
B-40 C-39	Power Circuit Unit	291273-101	291274-101		291275-101		291276-101		
D-15 D-23	Switch Assembly	229240-001	229237-001		229250-001		229244-001		
		230548-001 (USA)	—		236127-001 (Australia)	230443-001 (OCR)		230549-001 (OCR)	
		230542-001 (Canada)	—		230545-001 (Canada)		—		

From the library of: Diamond Needle Corp